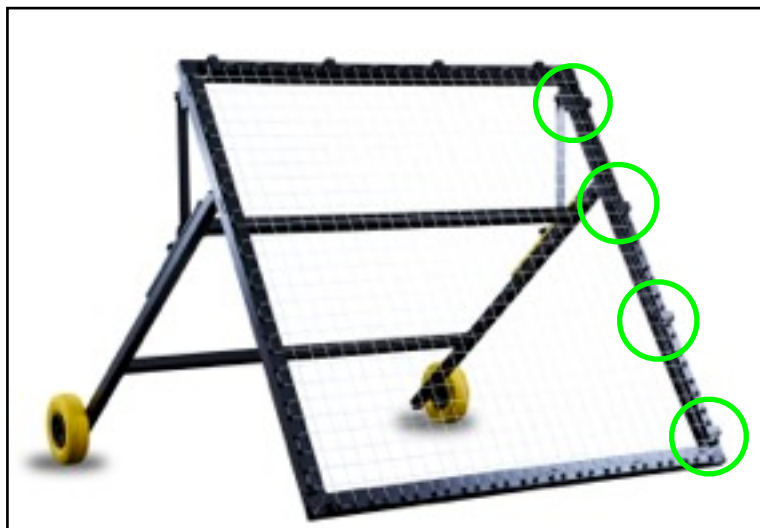


How to replace a string on m-station TALENT



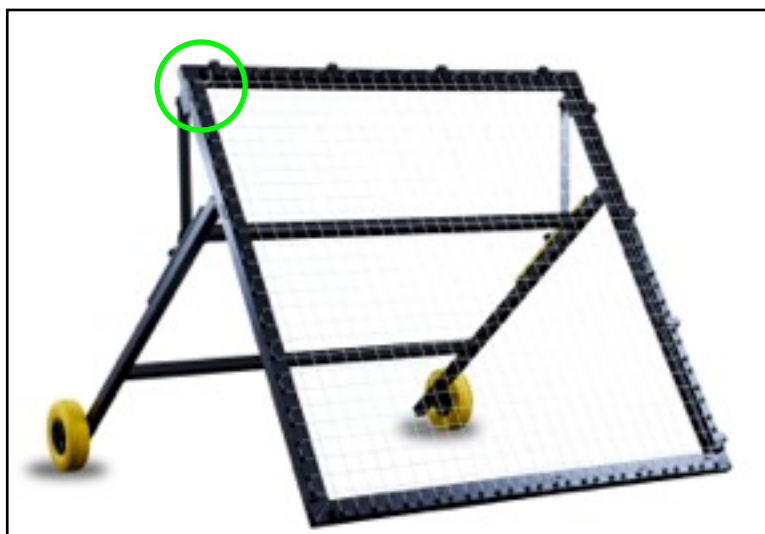
Start by pulling out the broken strings.

Then loosen the four screws on the outside of the frame on the righthand side (**green circles**).



As you loosen the screws the adjustable list will move towards the center (**white arrows**).

Loosen the screws until the difference between the edge of the frame and the adjustable list measures 3,4 cm.



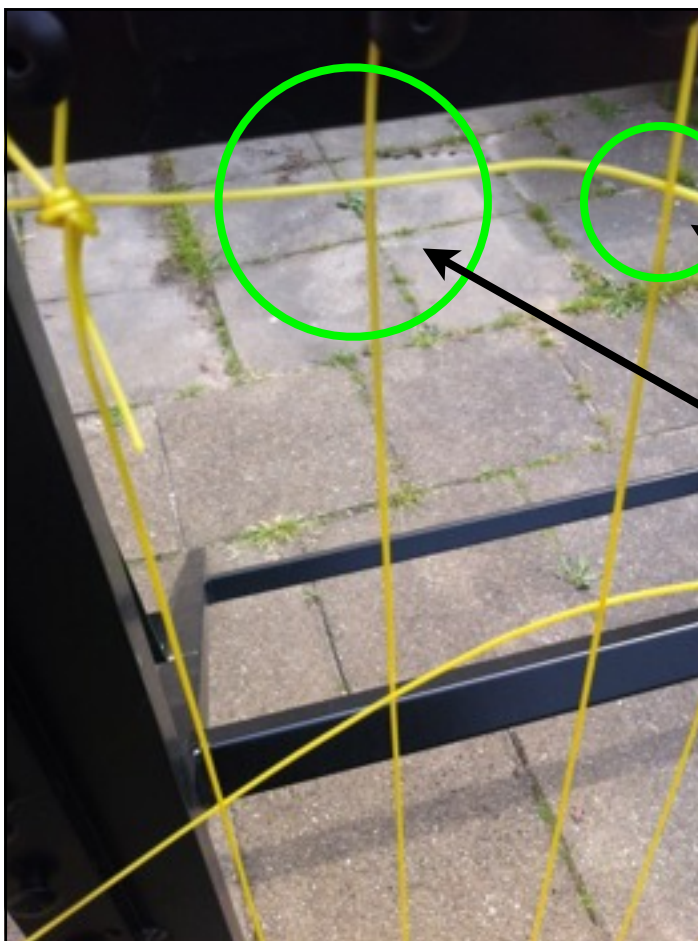
On the top left side of the frame you will find a single fixed knot (**green circle**).



Fix the knot at the end of the string on the knot in the top left corner of m-station, as illustrated on the picture.



Start merging the horizontal string with the vertical string by pulling the net from the left to the right as illustrated in the picture.



Pull the horizontal string through the vertical string - sequentially - behind and in front of the vertical string.

See illustration to the left.

Behind

In front

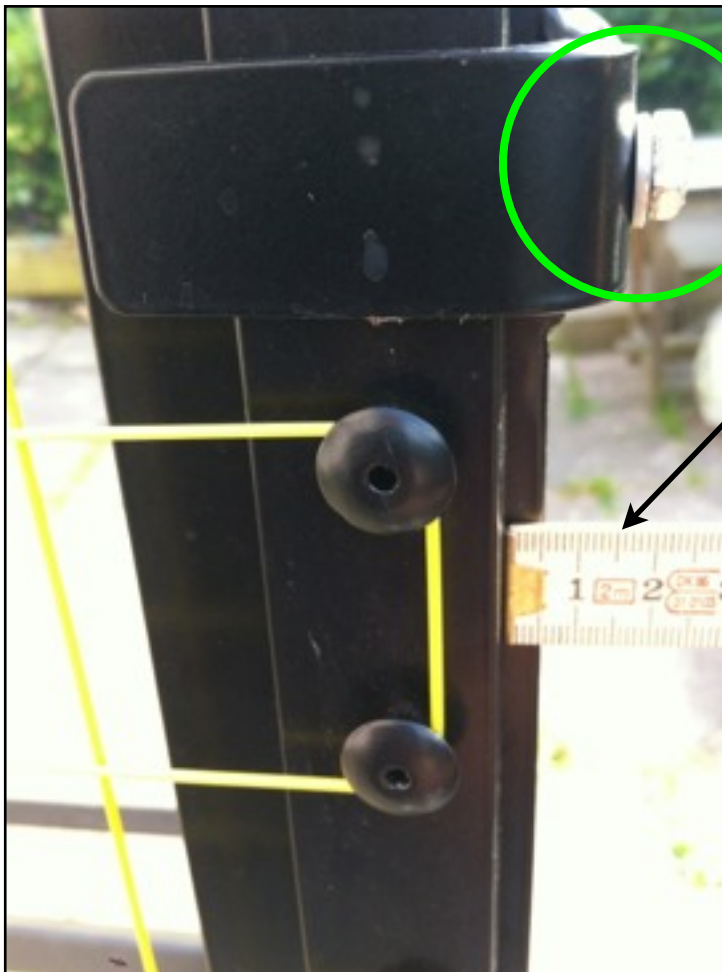


Keep going until you have merged all the horizontal strings with the vertical strings and pulled the strings around the fixed points on the left and on the right side of the frame.

In the end you will be able to fix the knot to the fixed point on the bottom right side of the frame.



Fix the knot to the fixed point in the bottom right side of the frame (**green circle**).



Tighten the screws (**green circle**) on the adjustable list after having merged the entire horizontal string with the vertical string and fixed the knot in the bottom right side of the frame.

Tighten the net by turning the screws on the outside of the frame until the adjustable list sits 0,5 cm from the edge of the frame.



IMPORTANT! Tighten the screws one at a time to even the pressure on the adjustable list as you tighten the net.

To avoid excessive suspension, test the rebound with a ball as you go along.